



SPRINGFIELD ARMORY

SPRINGFIELD  
MADE IN USA  
LR120479

Insight

X2

**X2**  
Sub-Compact  
Operator  
Manual



**INSIGHT**

[insightlights.com](http://insightlights.com)

MADE IN THE USA

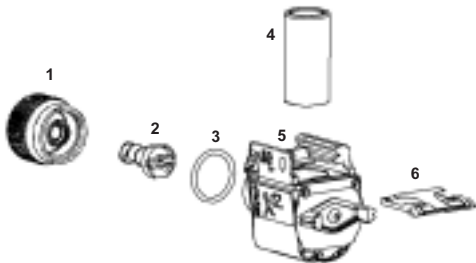
## WARNINGS

1. Before handling any firearm with the X2 **read and understand** the entire contents of your firearm manual and the X2 manual, especially the safety precautions and procedures for safe firearms handling.
2. **Failure** to follow the correct safety precautions and safe firearms handling techniques outlined in your firearm and X2 Operator's manuals when handling a firearm with the X2 can result in serious injury, damage to property, or **death**.
3. **Always** practice safe firearms handling techniques when handling a firearm with or without the X2.
4. **Never** point a firearm with or without the X2 attached, at anything or anyone that you do not intend to shoot.
5. Once the X2 is attached to a firearm, the firearm will be pointed at anything that the X2 is directly illuminating. **Do not** point the X2 at anything or anyone that you do not intend to shoot. The X2 is designed to produce a sufficient amount of light to allow someone in a low light environment to be safely illuminated and identified without the need to point the X2, and the attached firearm, directly at that individual. The light from the X2 can be pointed in a safe direction at a wall, floor, or ceiling and "bounced" onto the darkened silhouette for identification purposes, thus avoiding the need to point the firearm directly at an individual. The X2 can be de-focused for wide-angle illumination.
6. The ON/OFF switch on the X2 allows you to operate the switch **without** placing your finger inside the trigger guard. **Always** keep your fingers **off** the trigger and **outside** the trigger guard until you are ready to fire the firearm.
7. **Always** check to see the chamber of the firearm is empty or "clear" before attempting to mount or dismount the X2. Follow the "clearing" procedures as set forth in the manual for your firearm.
8. **Always** remove the X2 from the firearm when performing maintenance or cleaning the X2 or when replacing bulbs or batteries.
9. **Failure** to follow any of the safety warnings listed above when handling a firearm and/or the X2 can be dangerous and can result in serious injury, damage to property, or **death**.

10. **Do Not** operate the X2 around cleaning solvents or flammable/combustible materials. Avoid use of the X2 in environments involving gasses or a flammable atmosphere, such as evaporated gasoline. **Do Not** use the X2 in areas where gasoline, paints, solvents, or other flammable liquids are stored.
11. The X2 should be tested periodically during periods of non-use to ensure that it is functioning properly. When anticipating use of and reliance upon the X2, check the X2 beforehand to ensure that it is in proper working order.
12. Proper functioning of the X2 is dependent upon a fully-charged battery. Use care when handling batteries. Any battery has the potential to leak harmful chemicals that can damage skin, clothing, or the inside of the X2. To avoid risk of injury, do not let any material leaked from a battery come in contact with eyes or skin. Do not expose batteries to excessive heat. Follow battery manufacturers' instructions as to proper handling, storage, and disposal of batteries.
13. **CAUTION: Never** place the light on its face (bulb down) while on. The bulb generates intense heat and could cause damage to the X2 or the surface it is on.

**WARNING**  
**DO NOT STORE THE X2 WITH BATTERY INSTALLED**

## X2 PARTS DIAGRAM



<b>Item</b>	<b>Description</b>	<b>Spare Part #</b>
1	Bezel	CFL-009
2	Bulb Assembly	CFL-010
3	O-Ring	AS-568A-016
4	Battery (One 3 Volt Lithium)	CR2
5	X2 Body	N/A
6	Top Cover	MTV-008

## MOUNTING / DISMOUNTING

### Dismounting:

Pull Down on  
the Latch Bar



### Mounting:

1. With your “cleared and safe” firearm in your left or right hand, hold the X2 in the opposite hand with the bezel facing in the same direction as the muzzle of the firearm, safely away from your body.
2. Bring the X2 up and toward the firearm, aligning the grooves of the X2 and the grooves on the firearm; slide the X2 straight back until the latch engages into the locking slot located between the grooves of the firearm. There will be an audible “click” when the X2 is secured.
3. To check for positive engagement of the X2 to the firearm, attempt to slide the X2 forward. You should not be able to move the X2 forward without disengaging the latch bar. The X2 is now mounted.

### Dismounting:

1. Place your free hand under the X2 with your index finger and thumb on each end of the latch bar. Pull down with the index finger and thumb to disengage the latch bar from the firearm, and push downward and forward until the X2 is clear of the grooves on the firearm.
2. Always store the X2 in the box provided, or in a pouch on your equipment belt.

**CAUTION: NEVER put your hand in front of the muzzle of a firearm.**

**Be sure you push the X2 forward, down, and away from the muzzle of the firearm when removing it.**

## BATTERY REPLACEMENT



Step 4

Step 5

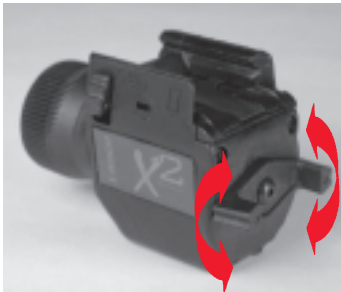


1. With the unit dismounted from the firearm, hold the X2 in one hand and with the thumb of the free hand, press down on the top cover of the light.
2. Slide the top cover back and away from the body of the light.
3. Remove the 3V lithium battery (CR2) from the X2 by turning the light upside down.
4. To replace the 3V lithium battery, insert it into the body of the X2 with the positive end down.
5. Repeat Step 2 in reverse order to reinstall the top cover. You will hear an audible “click” when the cover is secured in place.
6. Be sure the light is functioning by turning the unit on and manipulating the switch either up or down. The light should come ON. If not, check to be sure that the top cover is secure. If the light still does not operate, remove the top cover and verify that the battery is installed correctly.

**Manufacturer recommends you DO NOT store the X2 with the battery installed.**

# SWITCH OPERATION

The switch is part of the backplate and no attempt should be made to disassemble it. The switch has two positions, Momentary-ON and Steady-ON.



## **MOMENTARY-ON POSITION:**

Pressing and holding the rocker switch in the Momentary-On position will make the light turn on and stay on until the rocker switch is released.

- Right hand: push up with the trigger finger.
- Left hand: push down with the trigger finger.

## **STEADY-ON POSITION:**

Pressing the rocker switch in the Steady-On position will make the light come on and stay on until the rocker switch is pushed back to the OFF position.

- Right hand: push down with the trigger finger.
- Left hand: push up with the trigger finger.

## **CAUTION**

**Never place the light on its face (bulb down) while on. The bulb generates intense heat and could cause damage to the X2 or the surface it is on.**

# FOCUSING



To focus the beam of the X2, simply turn the bezel until the desired focus is reached. Be careful not to unscrew the bezel from the body.

## CAUTION

**DO NOT** place your hand in front of the muzzle of the firearm when turning the bezel.

## BULB REPLACEMENT

1. Dismount the X2 from the firearm and turn the unit to the OFF position.
2. Turn the bezel counter-clockwise until it can be removed from the main body. There is a slight spring pressure as the bezel comes free of the retaining threads.
3. Remove the old bulb from the X2 as shown.
4. Insert the new bulb into the bulb cavity.
5. Reinstall the bezel by rotating clockwise, taking care to align the recoil spring in the counter-bore of the reflector, and be sure the o-ring is not pinched.

### NOTE

Be sure to fully engage the bezel on the X2 main body so it does not come loose during firing.



### CAUTION

Only replace the bulb when the X2 is detached from the firearm.

# MAINTENANCE

**The Manufacturer recommends removing the X2 from the firearm before any maintenance is performed.**

## **General Cleaning:**

1. Clean the X2 by rinsing with clean water or with a mild soap and water, then wipe dry with a soft cloth. Standard gun cleaning solvents (i.e., Hoppes®) may be used to clean stubborn areas. Rinse with clean water to eliminate residue. Cleaning should be done whenever the X2 becomes dirty or after exposure to salt water.
2. To clean the illumination window, wipe using a soft cloth with clean water, alcohol, or general purpose window cleaner. NOTE: Before shooting, to avoid a buildup of muzzle blast on the flashlight bezel lens, rub a small amount of oil or lubricating solvent on the exterior glass ONLY. This will make post-shooting cleanup easier.
3. Clean the electrical contacts with Q-Tips® dipped in alcohol, or for heavier buildup use a standard pencil eraser.
4. Replacement bulbs, part number CFL-010, can be purchased through the dealer where you purchased your light or you can contact Insight Technology directly to locate a stocking distributor.

# **LIMITED WARRANTY**

## **INSIGHT TECHNOLOGY INCORPORATED**

### **12 MONTH LIMITED WARRANTY**

Insight Technology Incorporated warrants for 12 months after purchase that its products will be free from defects in material and workmanship. At its sole discretion, Insight Technology Incorporated will repair or replace, at no charge, any product or part (with the exception of the lamp and battery) which is found to be defective under normal use and service. Insight Technology Incorporated's obligation to either repair or replace shall be the purchaser's sole and exclusive remedy under this warranty. The warranty does not cover battery leakage. The battery manufacturer should be contacted in the event of a leak.

This warranty extends only to the original owner. There are no warranties, expressed or implied, other than as set forth on this page, and Insight Technology Incorporated disclaims any warranties of merchantability or fitness for a particular purpose. Insight Technology Incorporated shall not be liable for incidental, consequential or special damages arising out of or in connection with product use or performance. For service, repair, or replacement, return unit "UPS Prepaid" with a copy of the sales receipt to Insight Technology Incorporated.



For service, repair, or replacement, please call for a Return Material Authorization (RMA) number before returning unit. Send via "UPS Prepaid" with a copy of the sales receipt and the RMA number clearly marked on the package to:

9 Akira Way, Londonderry NH 03053  
Attn: Commercial Sales  
Ph: 877.744.4802 Fax: 603.647.7234  
[www.insightlights.com](http://www.insightlights.com)

**The exportation of this product falls under the jurisdiction of the U.S. Commerce Department Bureau of Industry and Security and is subject to the Export Administration Regulations.**



Rev. April 2005